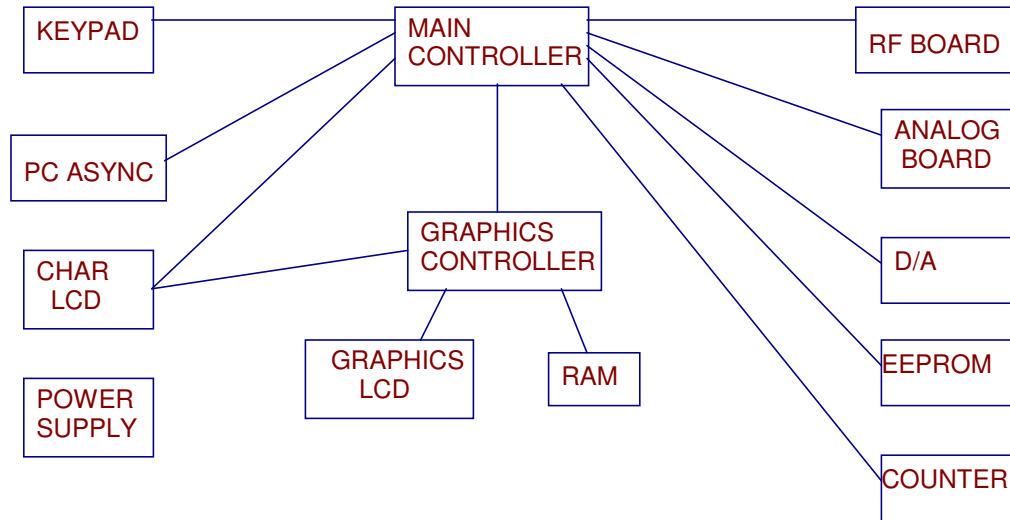
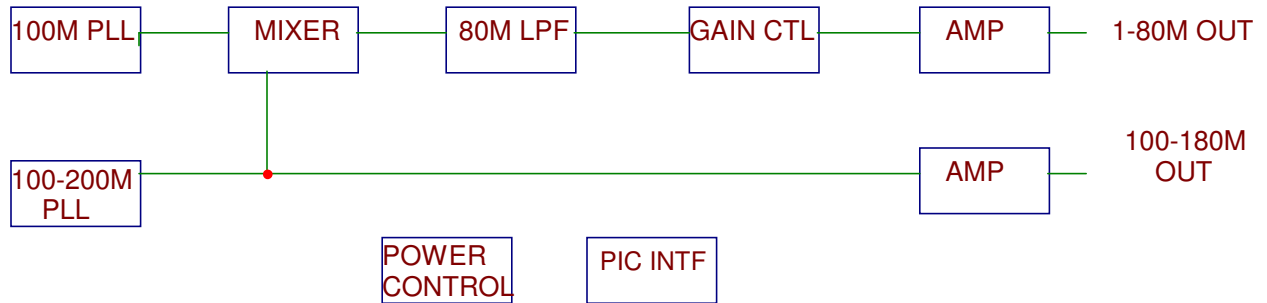


SYSTEM BLOCK DIAGRAM

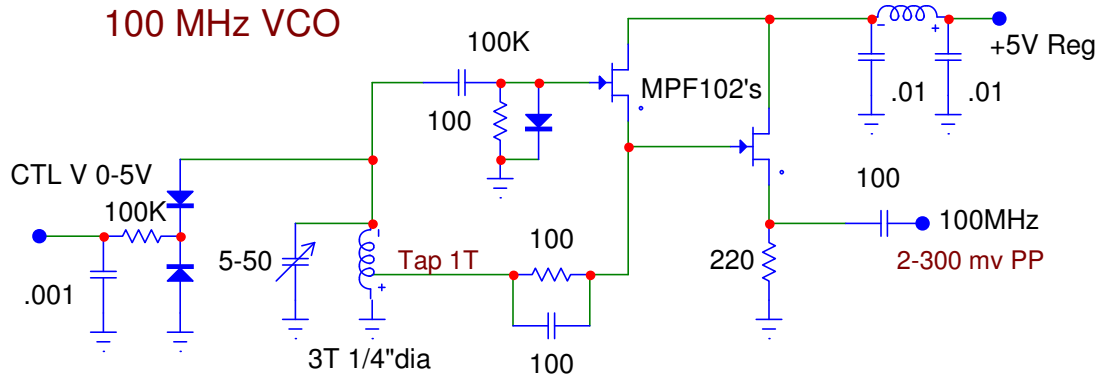


RF BOARD BLOCK DIAGRAM

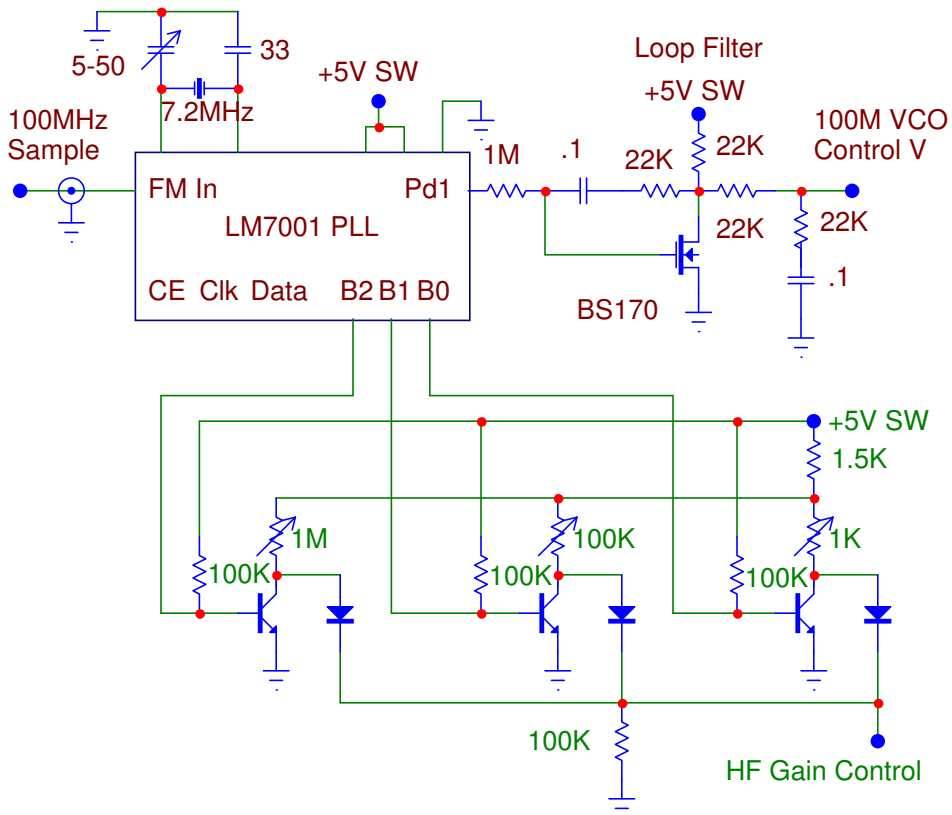


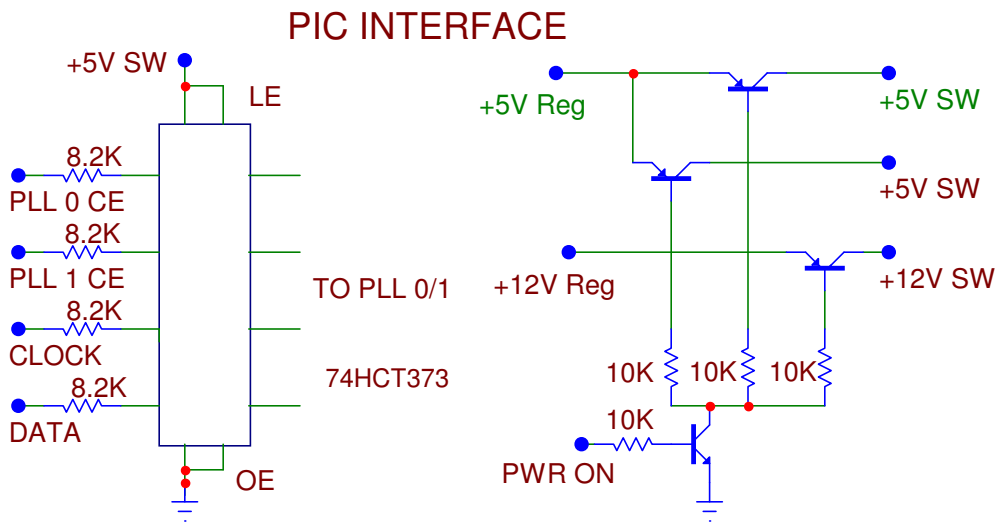
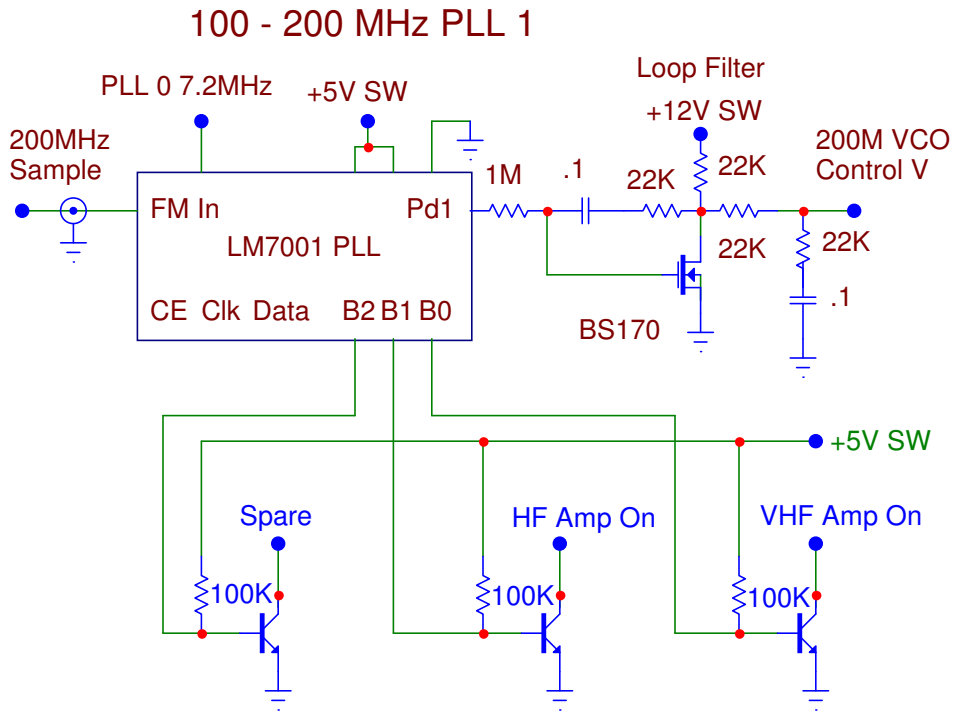
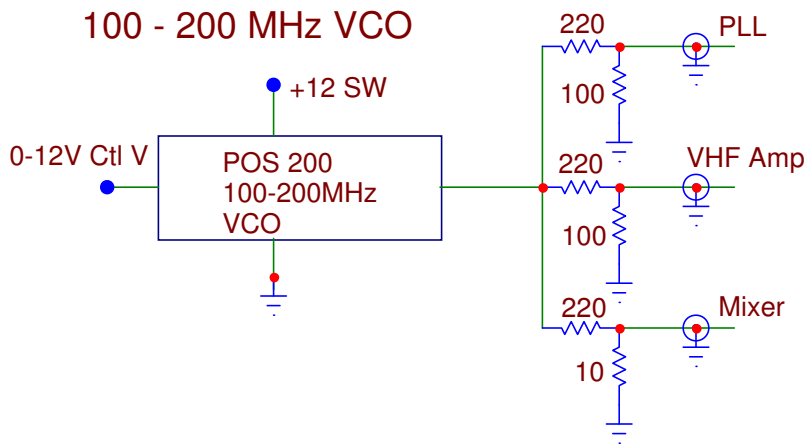
VCOs & PLLs

100 MHz VCO



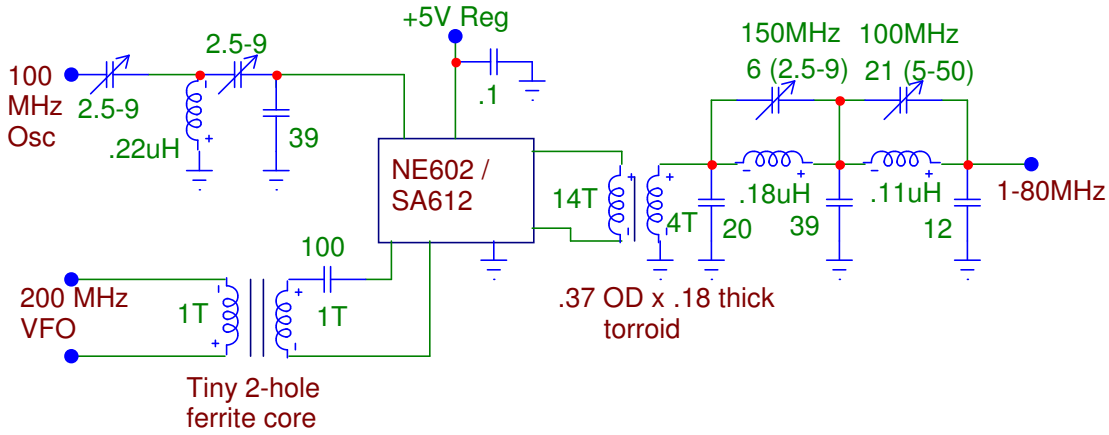
100 MHz PLL 0



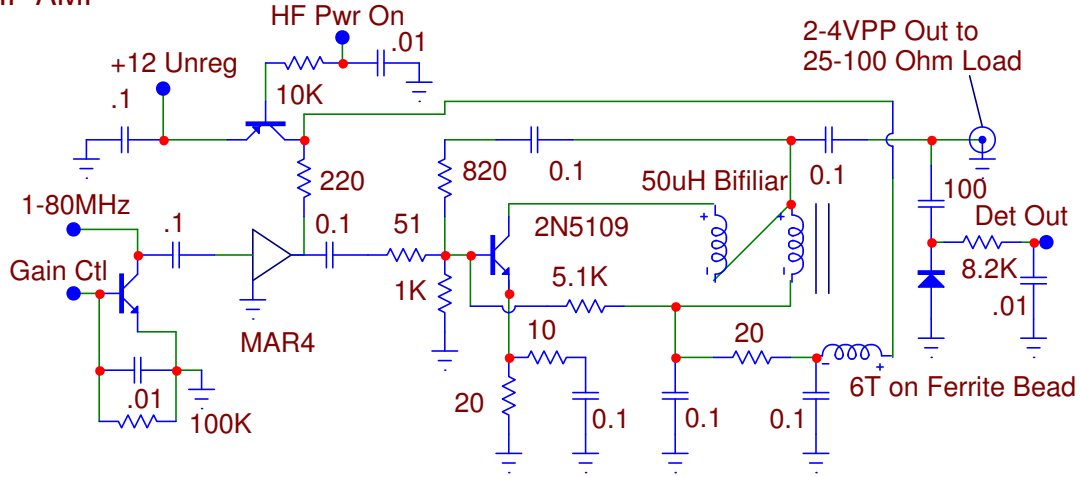


MIXER, LPF & AMPS

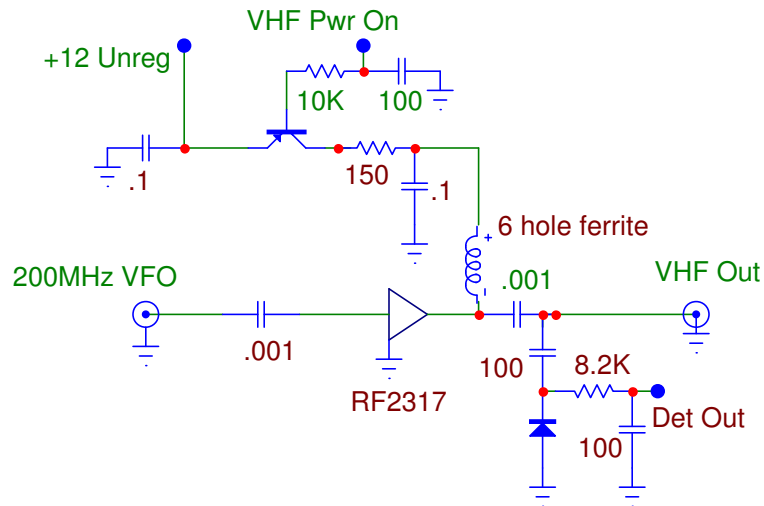
MIXER & LPF



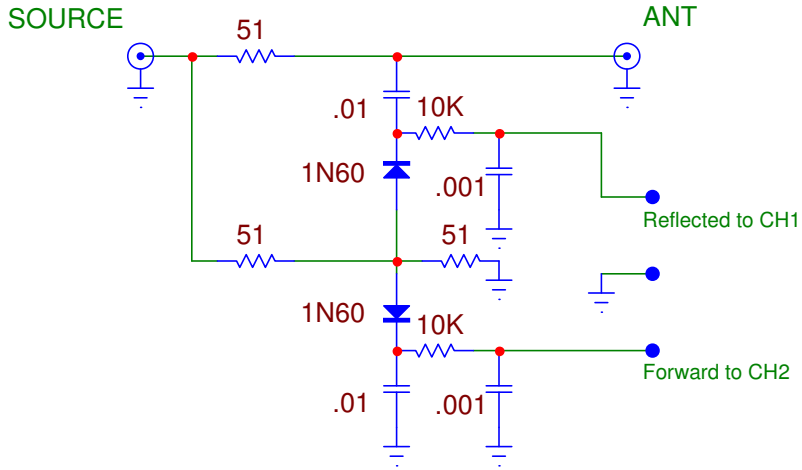
HF AMP



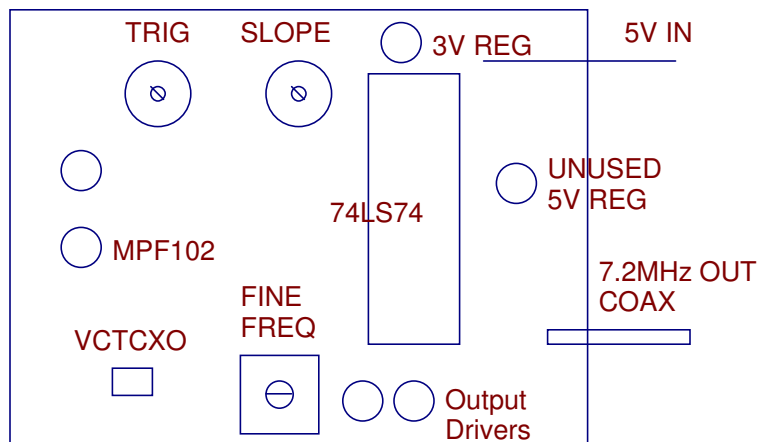
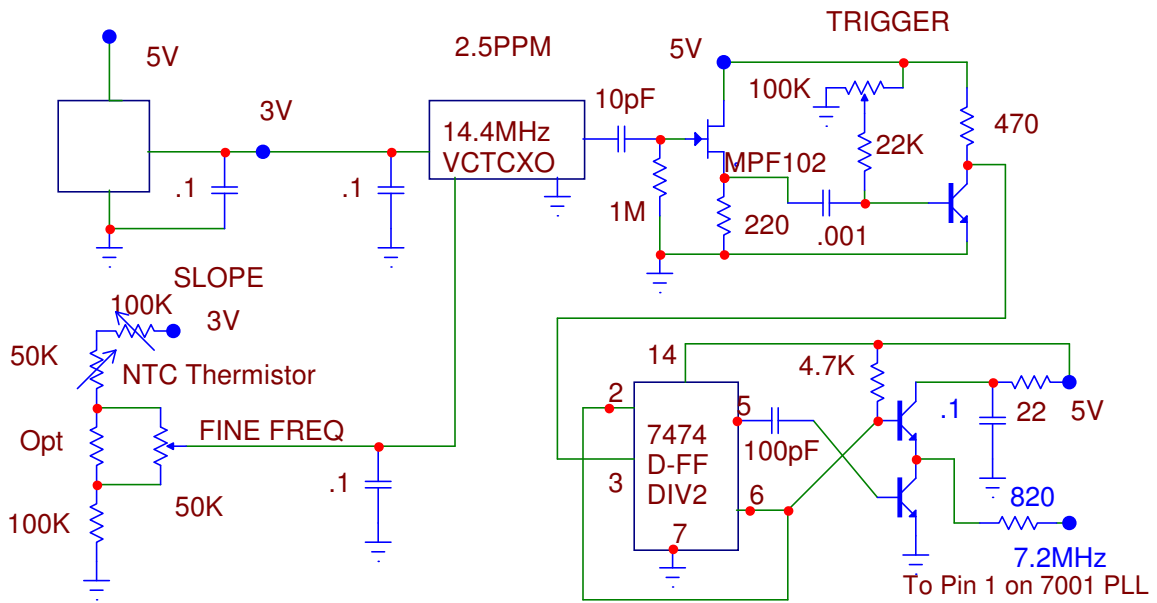
VHF AMP



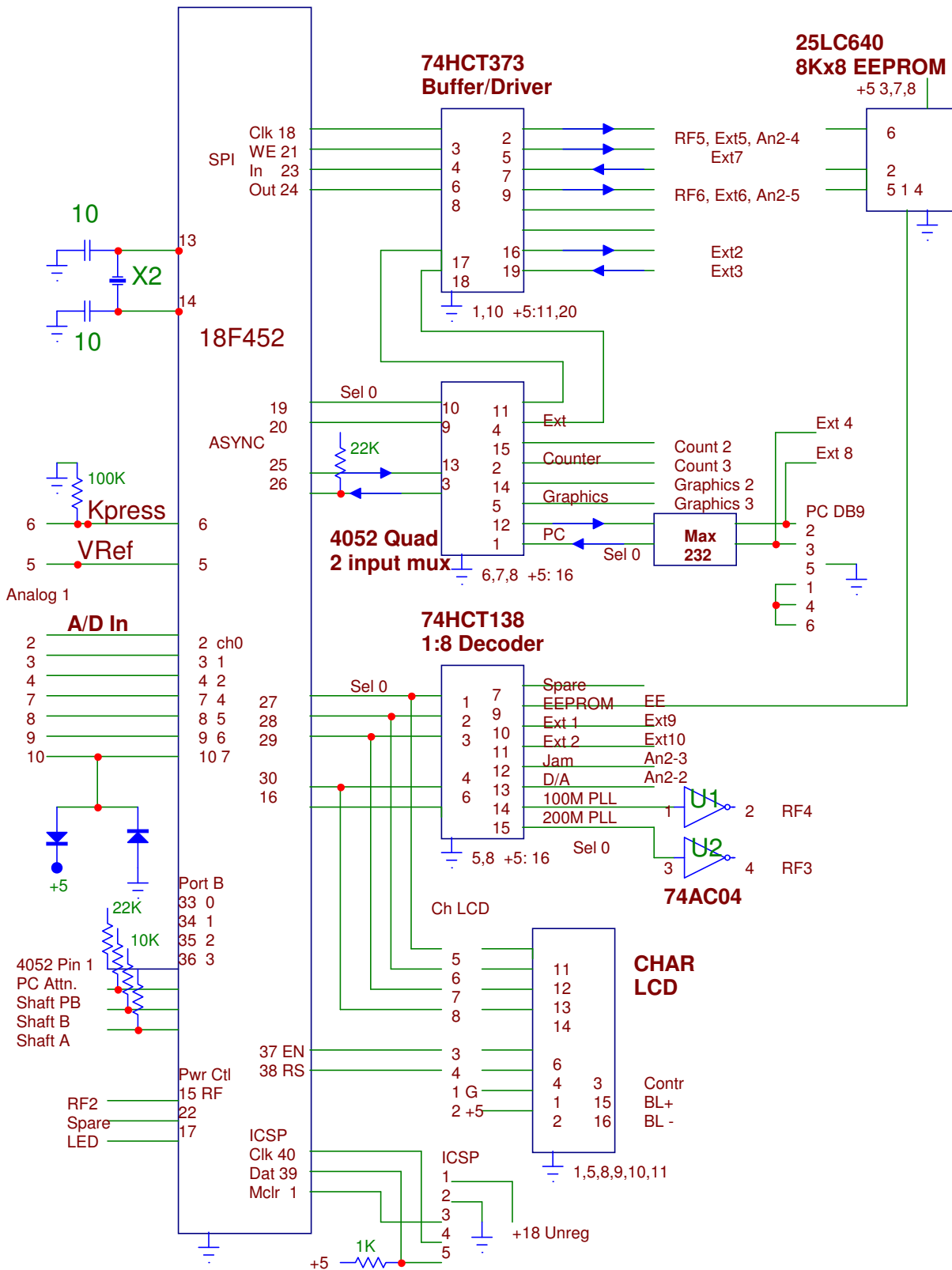
SWR BRIDGE



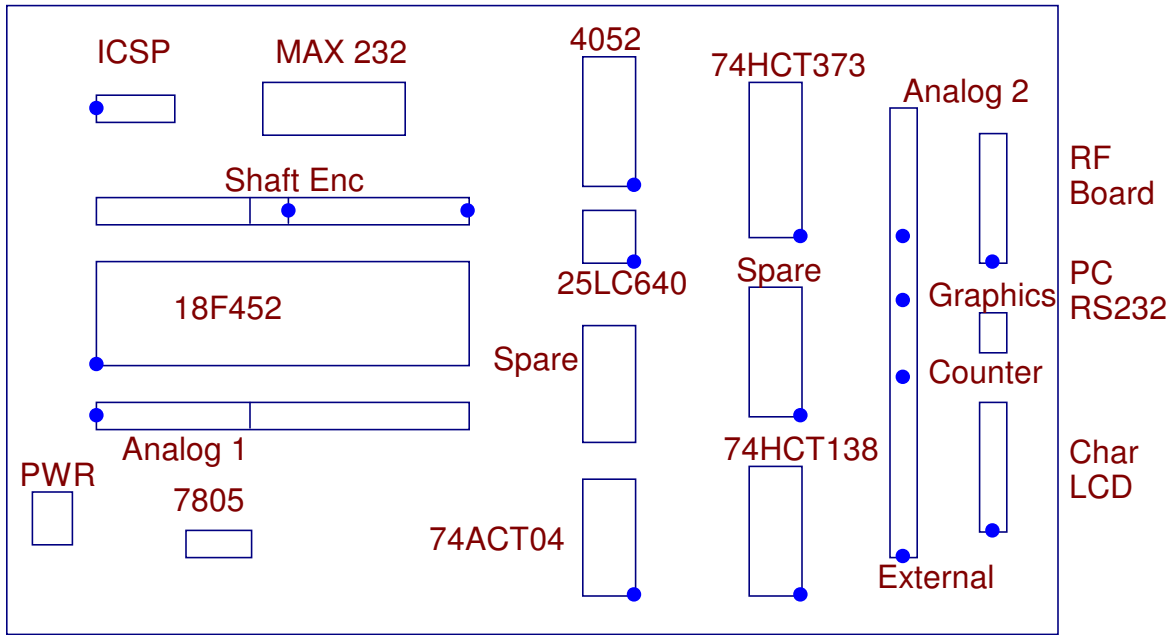
7.2 MHz High Stability Oscillator



MAIN PIC CONTROLLER

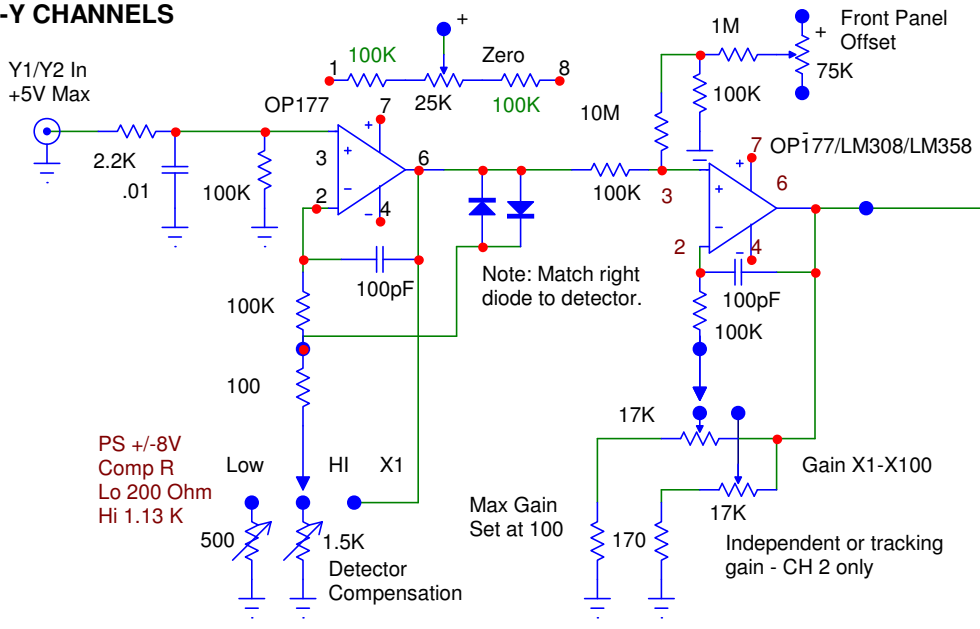


MAIN PIC COMPONENT SIDE

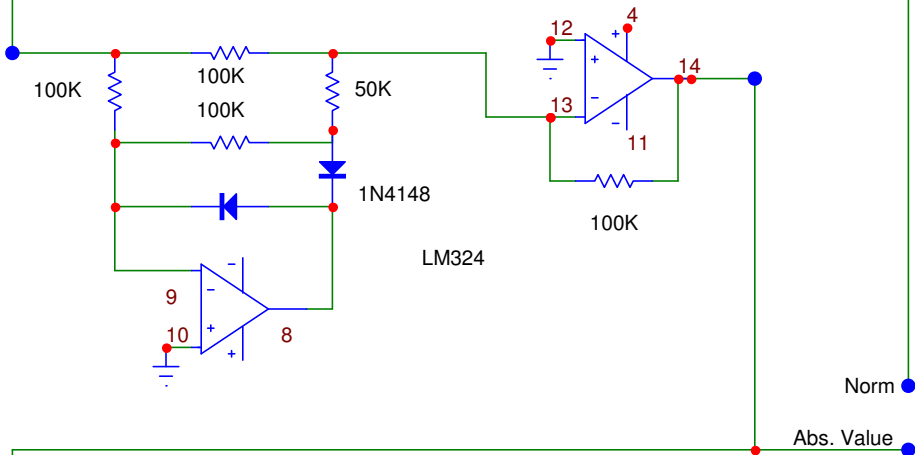


ANALOG BOARD

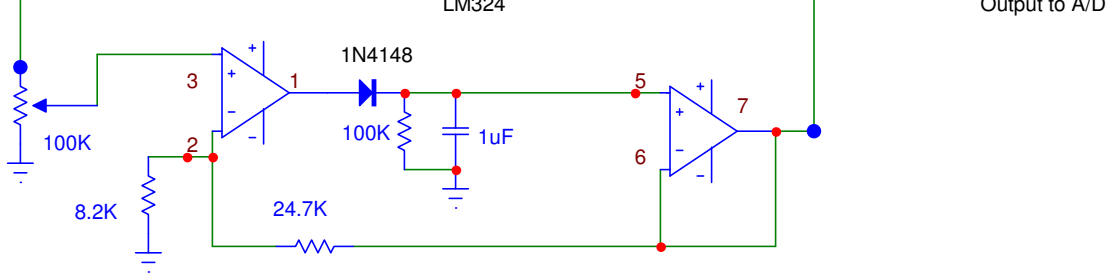
X-Y CHANNELS



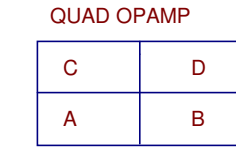
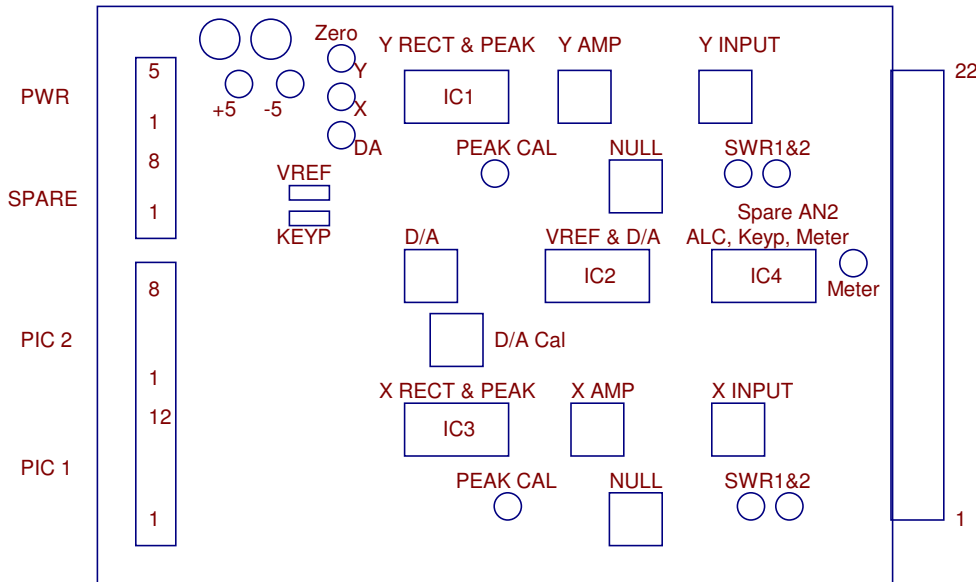
FULL WAVE RECTIFIER



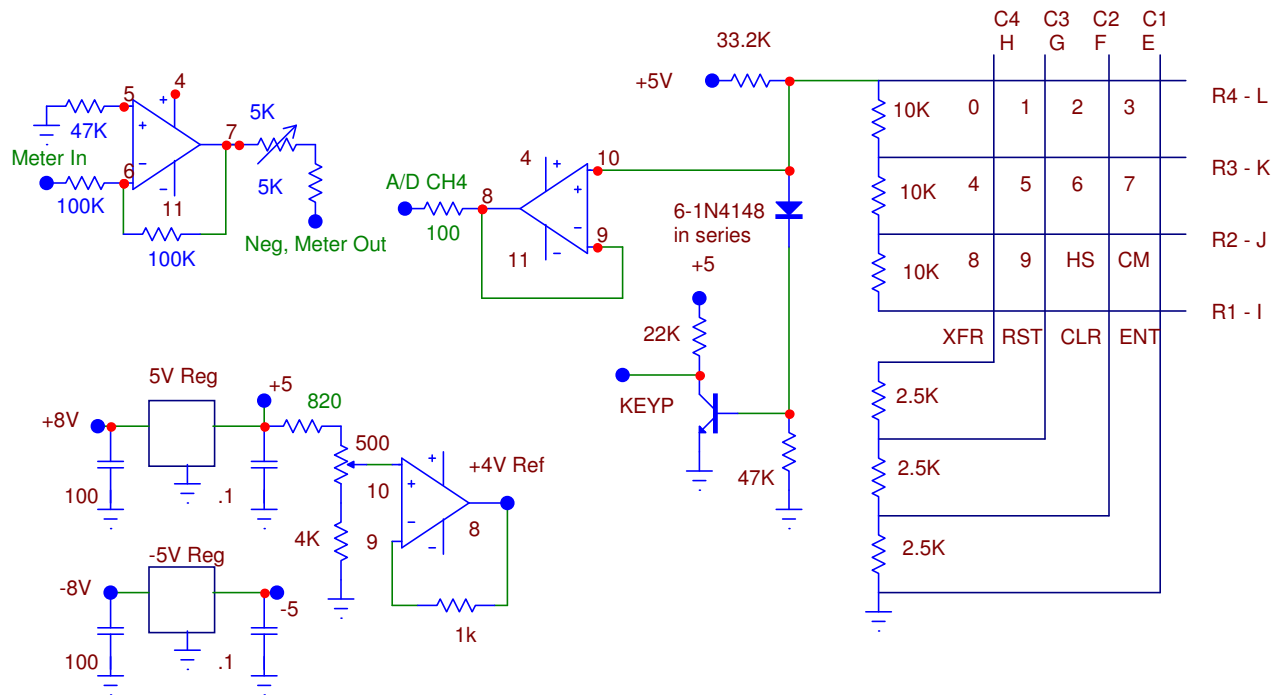
PEAK HOLD



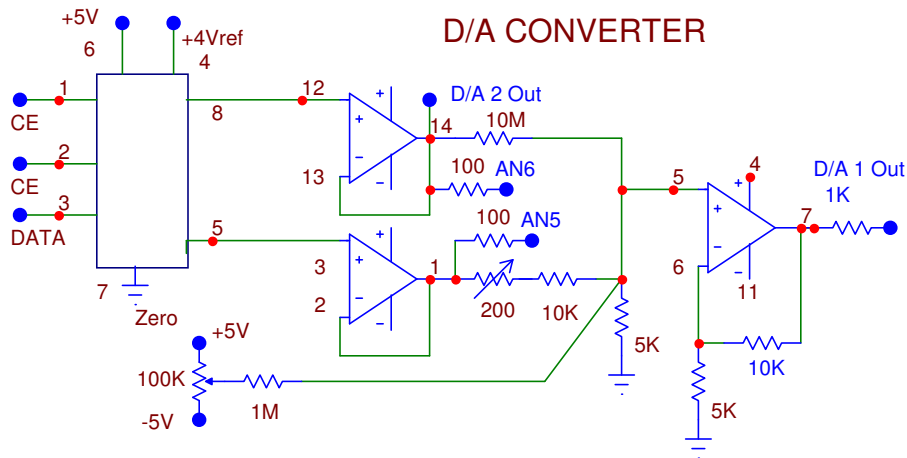
ANALOG BOARD COMPONENT SIDE



KEYPAD MATRIX

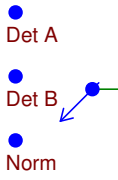


D/A CONVERTER

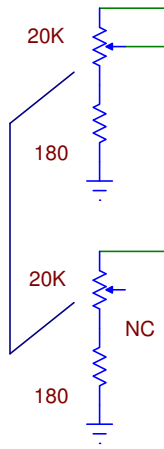


EXTERNAL, PANEL CONNECTIONS, POWER SUPPLY

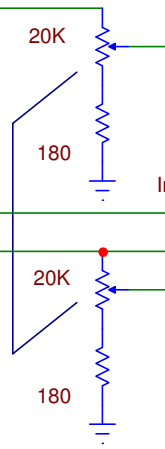
Comp. CH 1



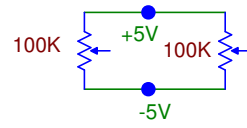
Gain CH 1



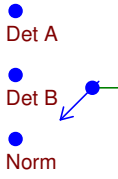
Gain CH 2



Zero CH 1 Zero CH 2



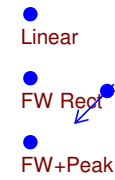
Comp. CH 2



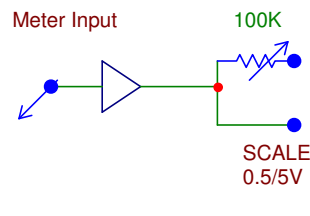
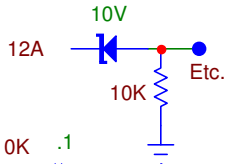
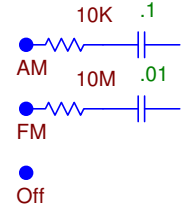
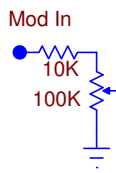
Sel. CH 2



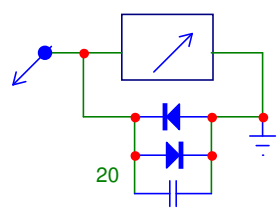
Sel. CH 1



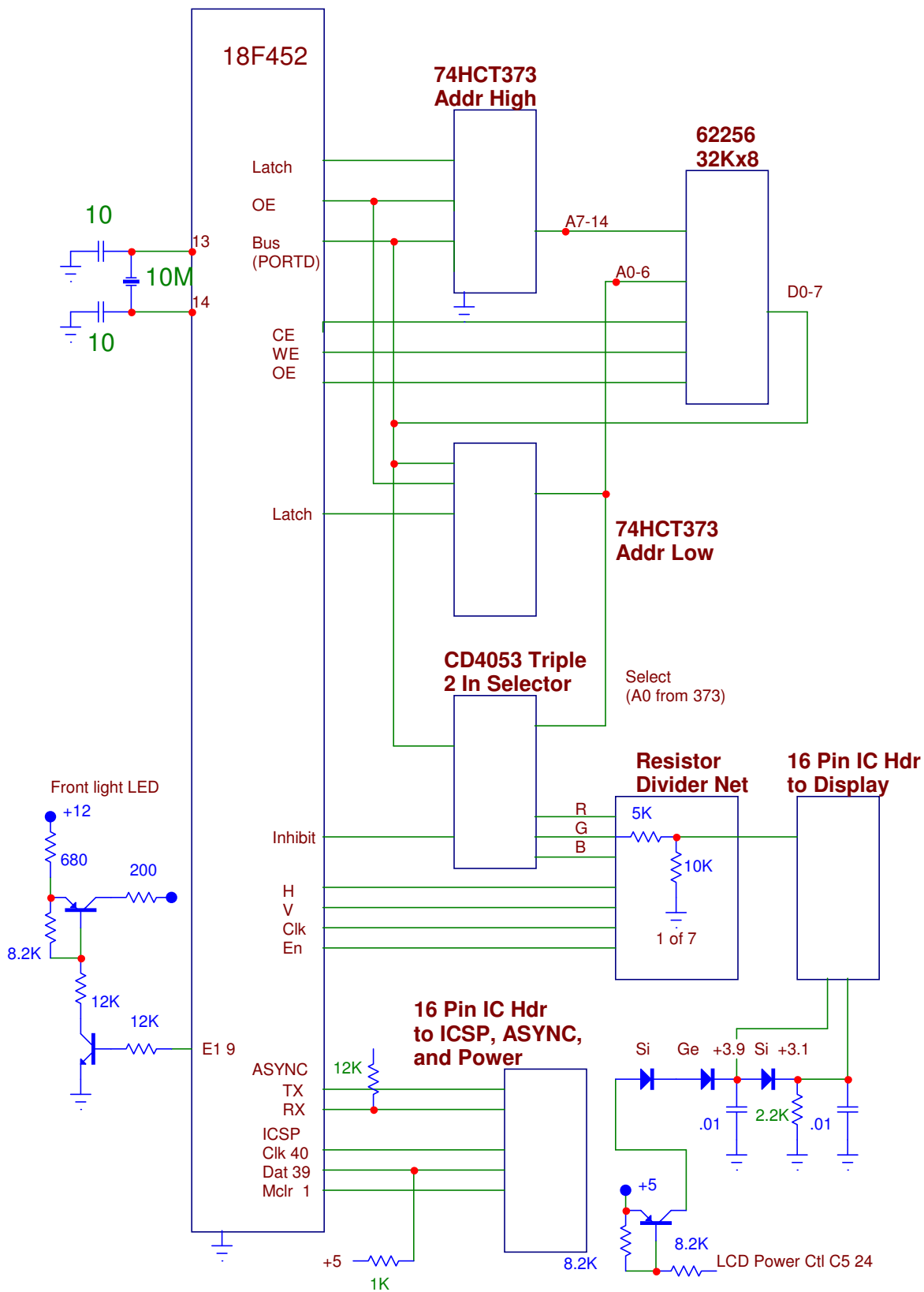
MODULATION



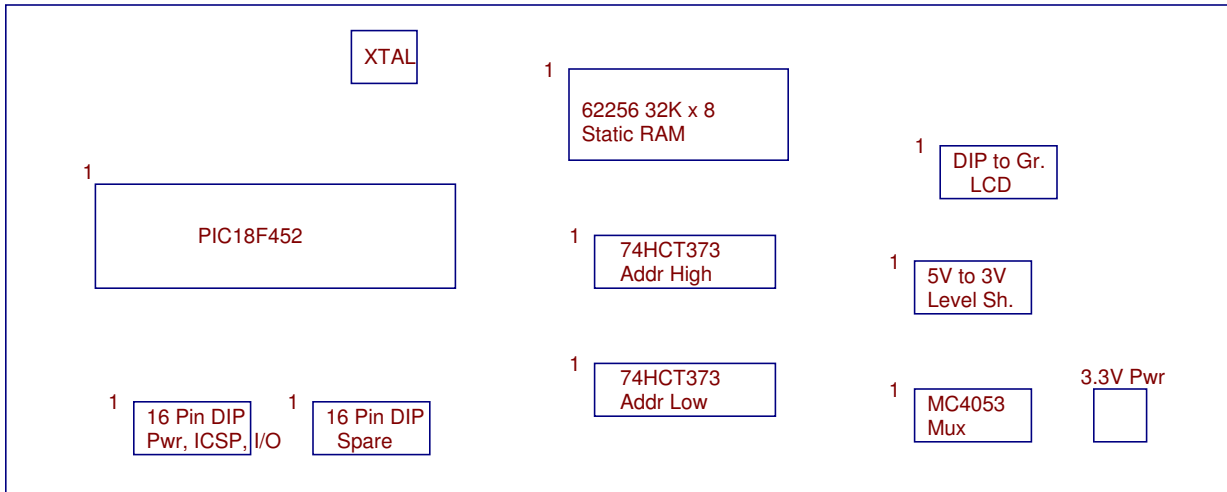
Analog Meter



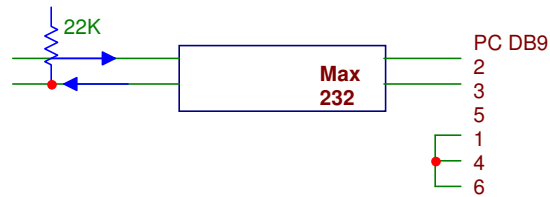
GRAPHICS LCD PIC CONTROLLER



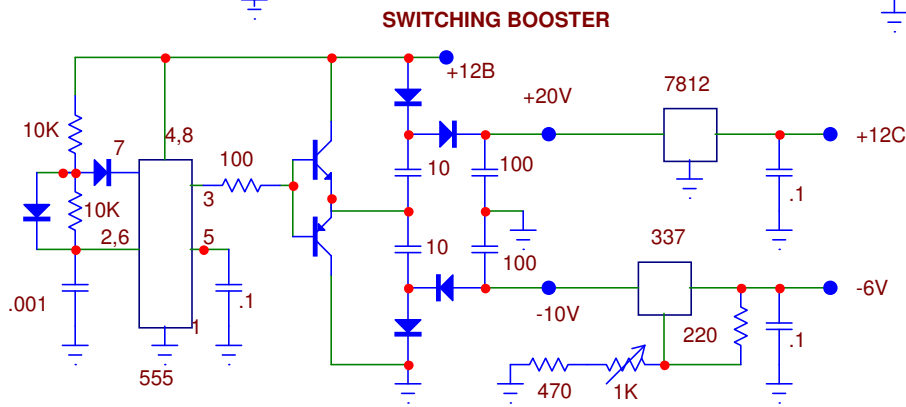
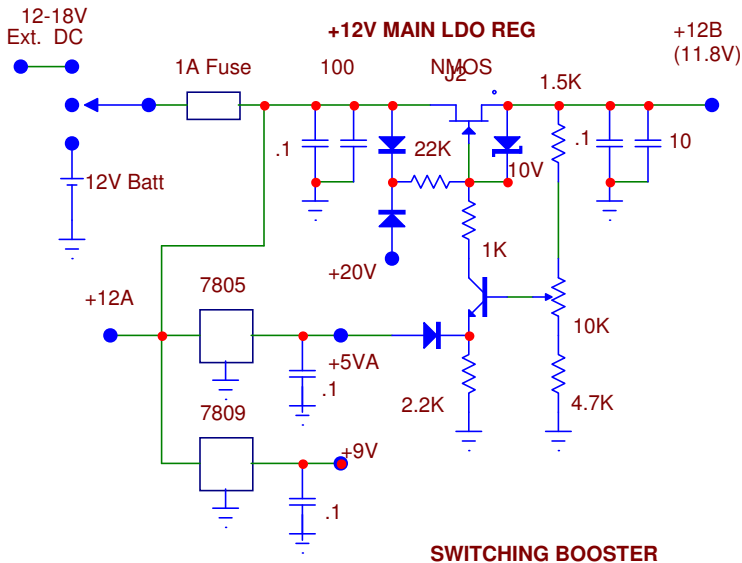
WIRING SIDE



TTL ASYNC TO PC RS-232 TEST ADAPTER

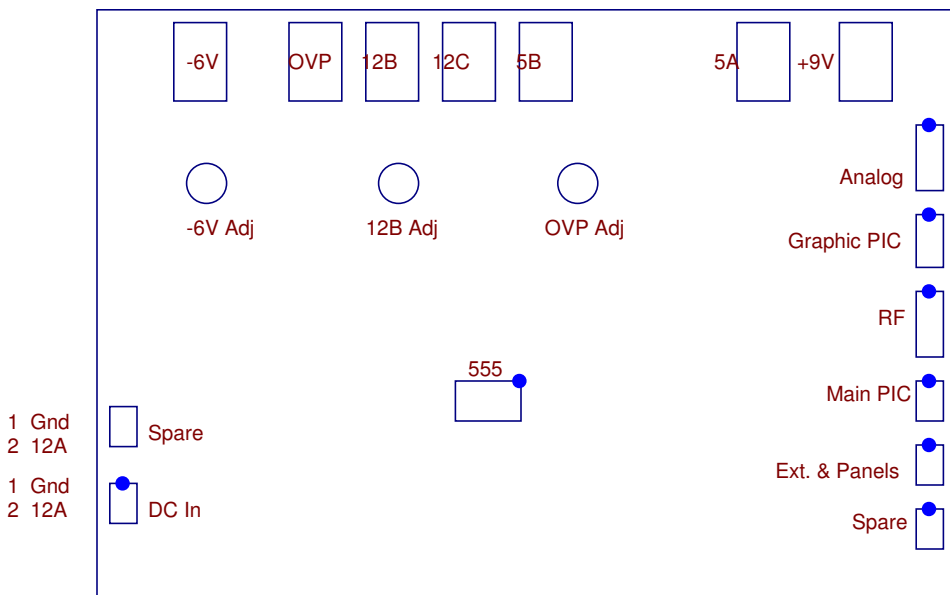


POWER SUPPLY



555 runs at 100KHz.
Replace w/ 12 to 5, 12 DC Conv.

PS COMPONENT SIDE



- 1 Gnd
- 2
- 3 +9
- 4 -6
- 1 Gnd
- 2 5B
- 3 12B
- 1 Gnd
- 2 5A
- 3 12C
- 4 12C
- 5 12B
- 1 Gnd
- 2 5B
- 1 Gnd
- 2 12A

ANALOG BOARD SHEET 3

ALC AMP & RF ON LED DRIVER

